



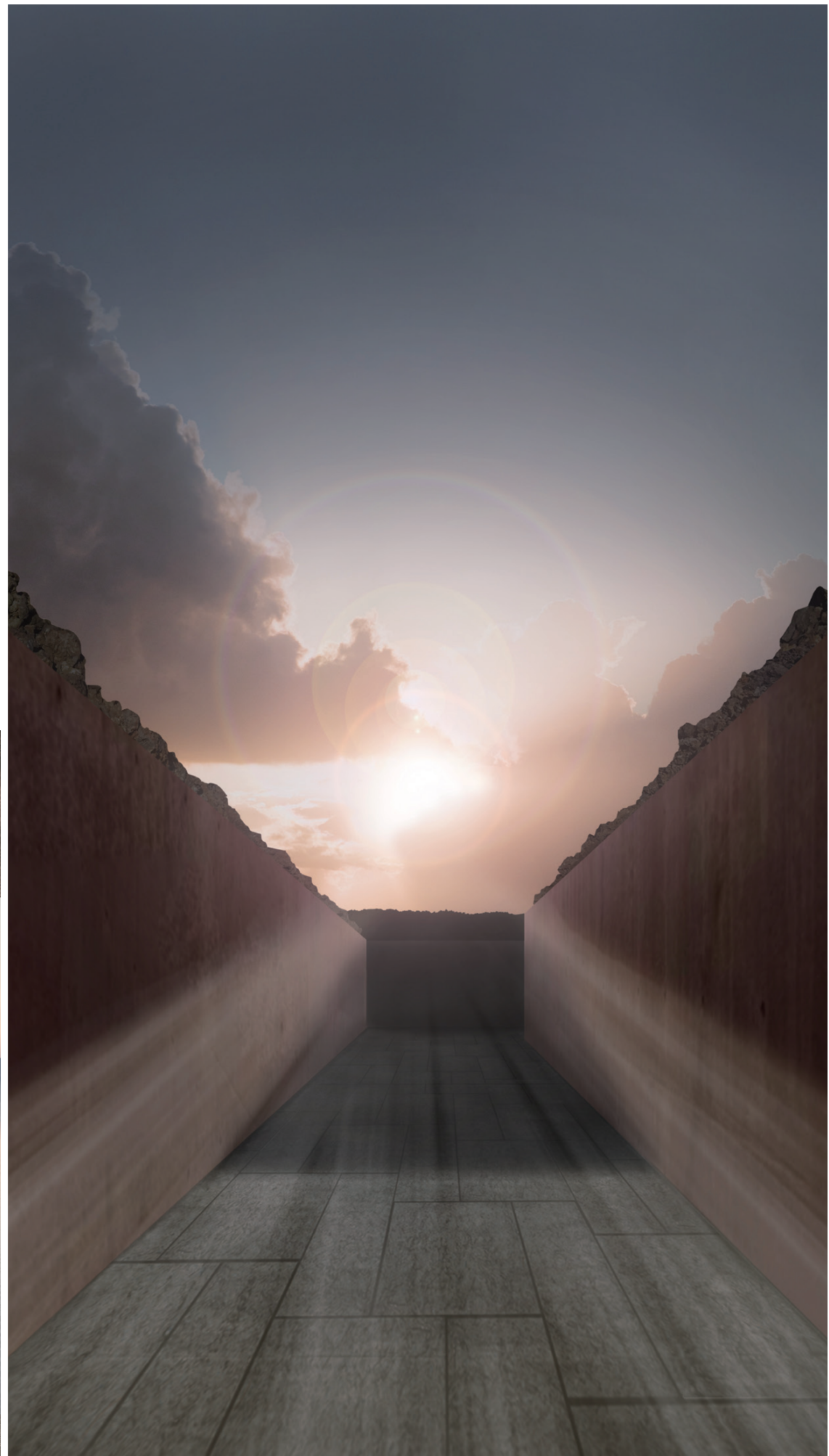
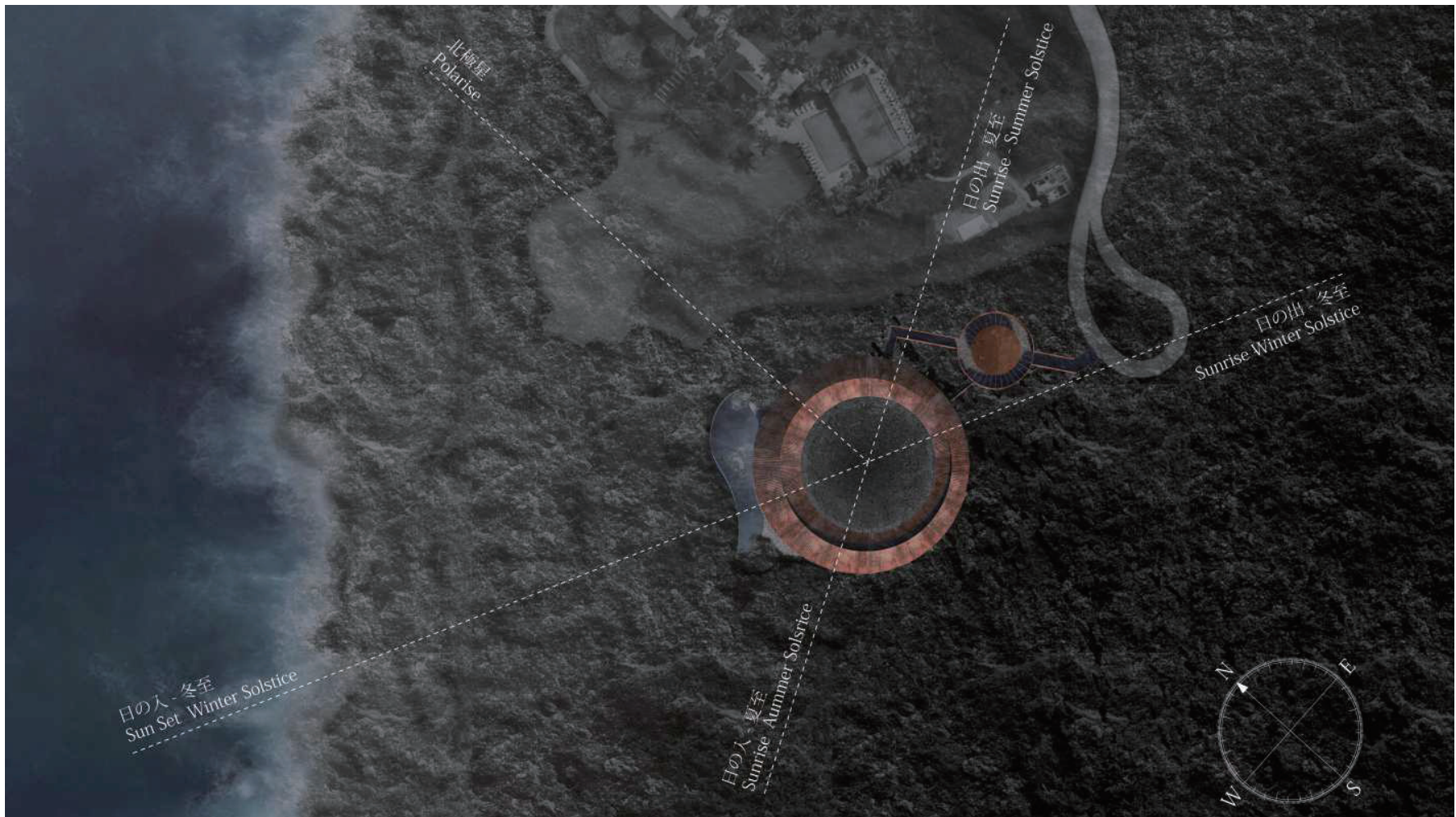
## Lavahenge

This villa is currently under construction on the island of Hawai'i. The ocean and sky intersect at the horizon, and on the mountainside, lava seeping out from Mauna Kea spreads over the earth. The island name of Hawai'i originally means "Place of the Gods." On this site where earth is formed, we decided to create a place to dedicate prayers to the ocean, Mauna Kea, the sun, and the moonlight.

Following the example of places of worship in ancient Hawai'i where lava was placed in a circular formation, a large ring-shaped roof peeks out from the lava earth. This ring-shaped building also functions as a sundial and year clock. The layout of copper cladding of the roof serves as a guide to observe the sun's movement over the day. It also indicates the arrival of the winter solstice, which symbolizes life and death, as well as the vernal equinox, autumn equinox, and the summer solstice, on which the sun's energy is the strongest during the year.

In the courtyard, a dry Japanese-style garden of lava is spread in a basin shape like a caldera, creating a primordial and visional landscape. At night, the place becomes a star observatory where the ring-shaped roof hides the surrounding lights while beautifully framing the sky. Tiny aperture as small as a needle is opened in the center of the courtyard to create the pinhole effect that projects the night sky with infinite twinkling stars all over the floor in the room underneath. In the center of the other underground space, the solely immobile North Star is always glimmering.

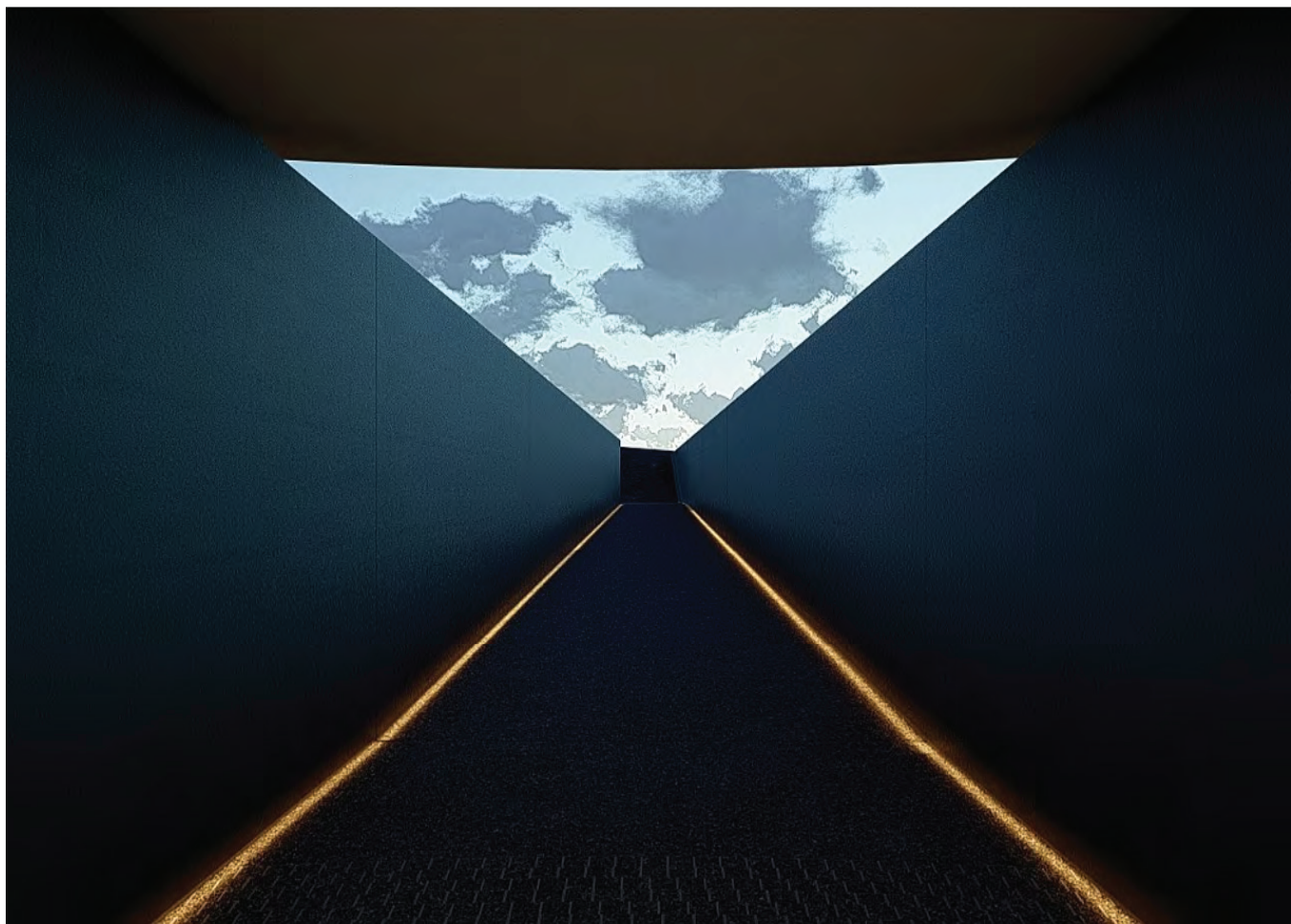
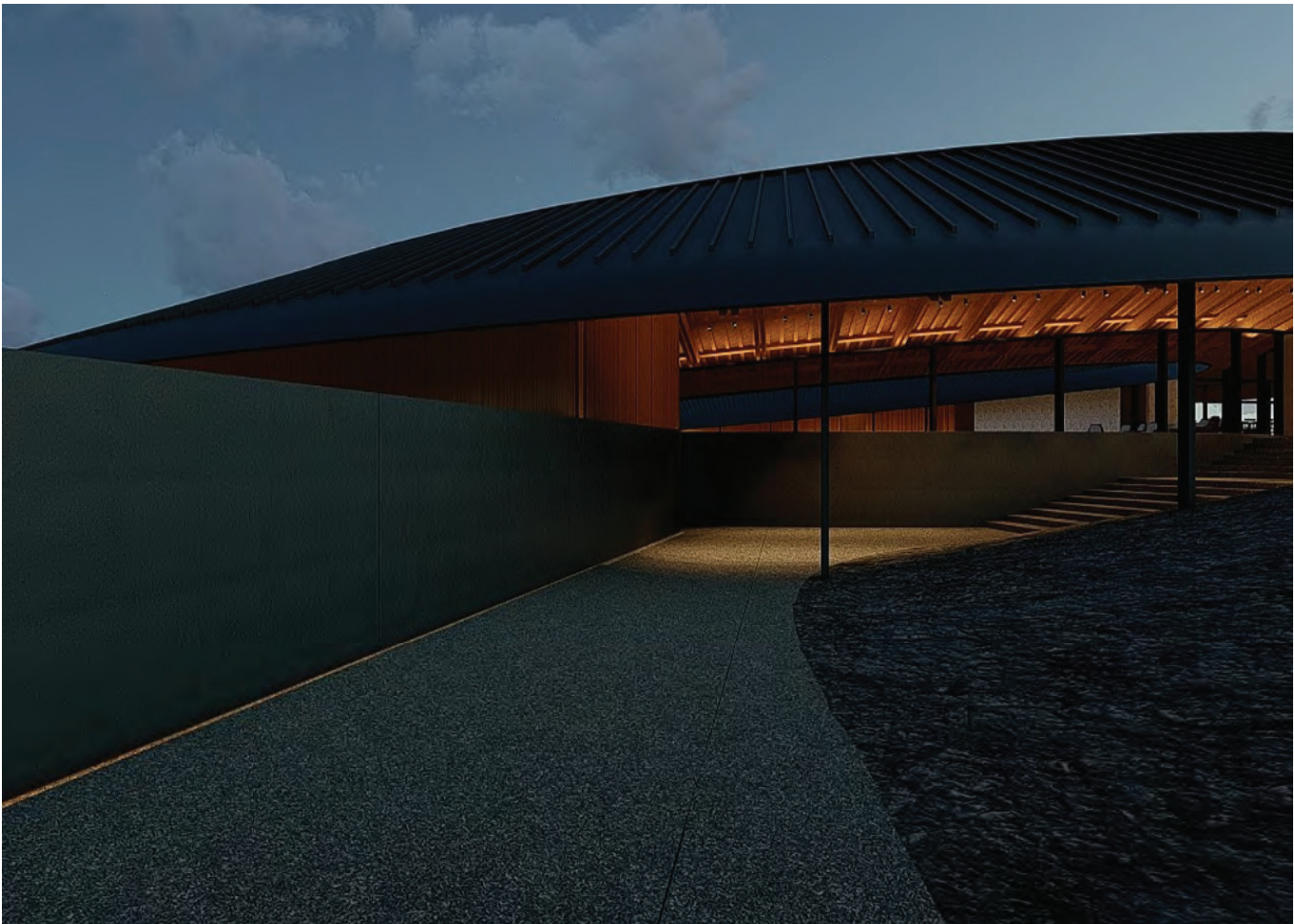
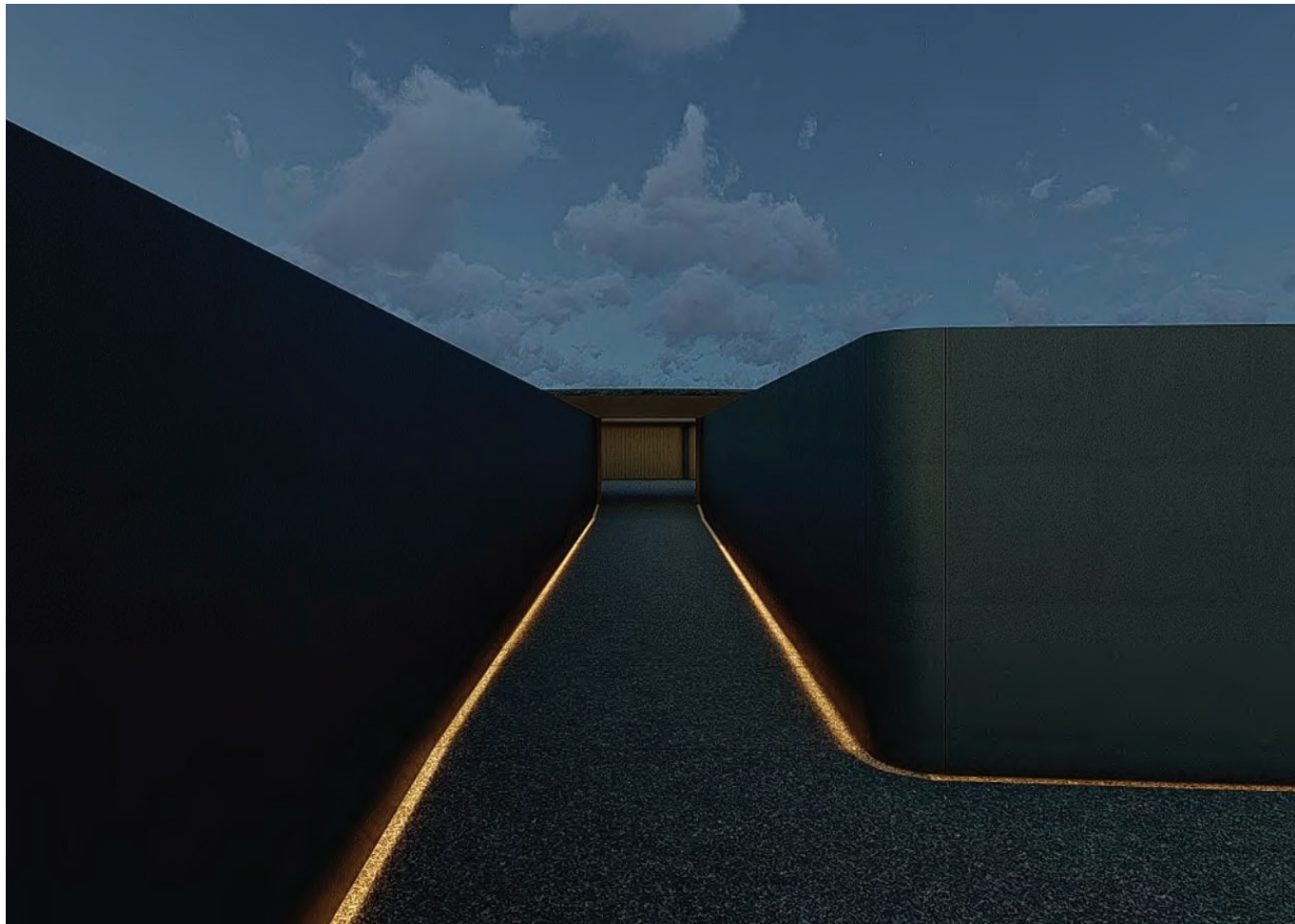








































Lavahenge  
Hiroshi Nakamura & NAP



